



OPEN
HERITAGE

OBSERVATORY CASES

The OC method

Call: H2020-SC5-2016-2017/H2020-SC5-2017-OneStageB
Number:776766

The sole responsibility for the content of this publication lies with the authors. It does not necessarily represent the opinion of the European Union. Neither the EASME nor the European Commission is responsible for any use that may be made of the information contained therein.



This project has received funding from the European Union's Horizon 2020 research and innovation programme under grant agreement No 776766



People. Places. Potential.

OBSERVATORY CASES

Observatory Cases are experiments in the adaptive re-use of heritage sites. They represent innovative prototypes in community and stakeholder involvement, resource integration, financial management, and area-based, territorial approach.

Observatory Cases are knowledge resources, linking analysis and practice.

They inform

- scientific research,
- model-formation,
- tool development and
- implementation during the project.



RESEARCH PERSPECTIVES

Anthropological analysis (Protagonists, motivations, story of the initiative)

Architectural analysis (heritage value, adaptive reuse)

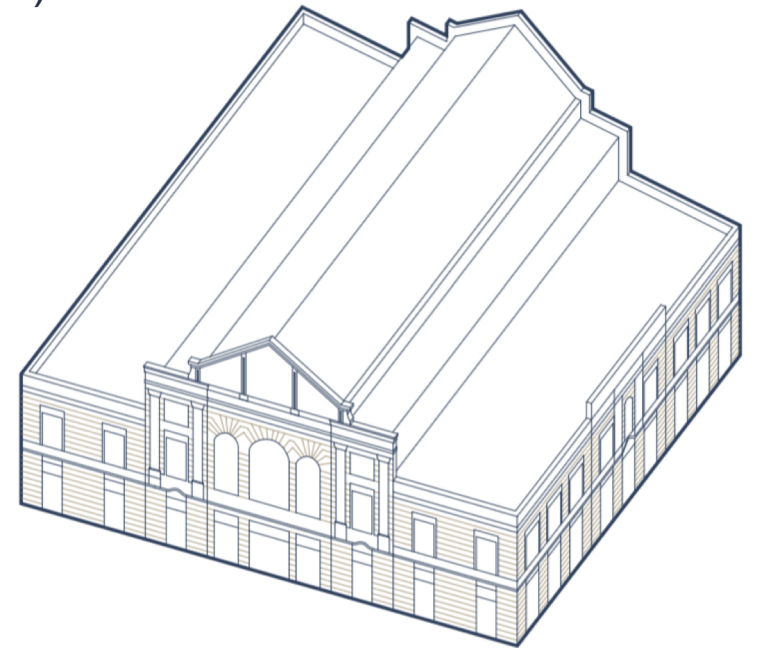
Geographical and demographical analysis (social context)

Legal, administrative and policy analysis (regulations and policies)

Resource integration (financial and economic models)

Stakeholder analysis (community involvement and partners)

Impact (territorial, social, economic impact)



Building: Stara Trznica – Old Market Hall



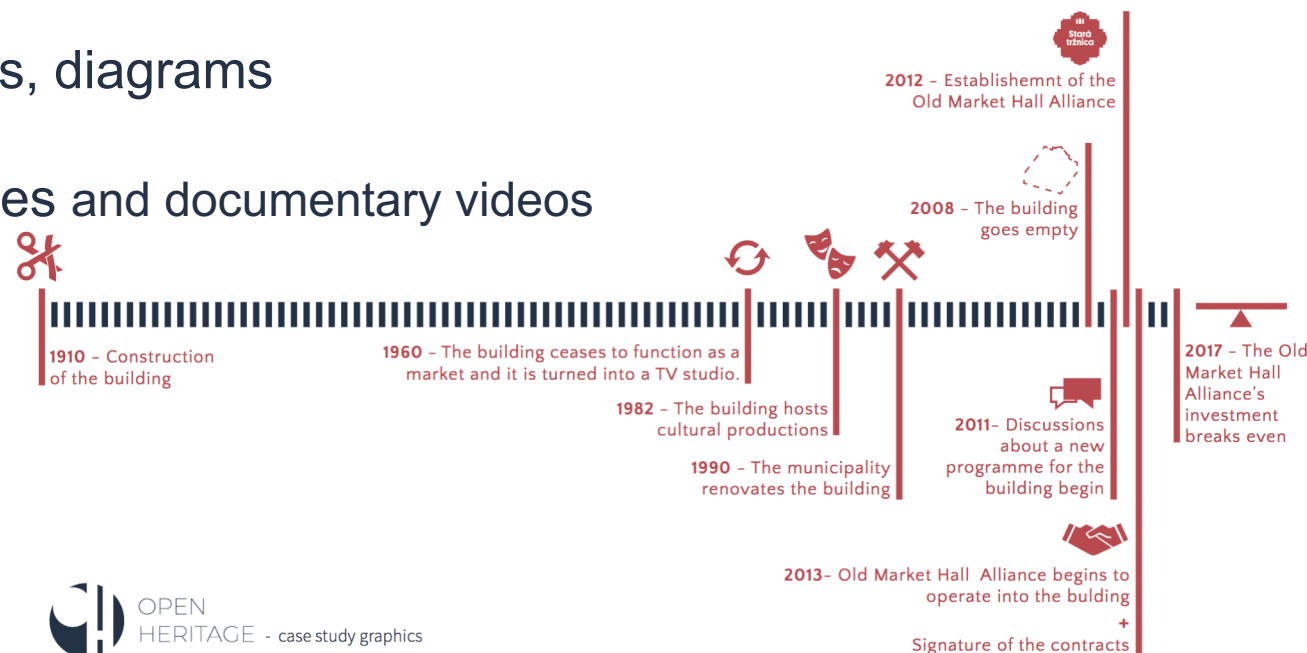
OBSERVATORY CASE RESEARCH

Observatory cases: in-depth analysis of adaptive heritage reuse projects

Research tools: desk research, site visits, interviews

Products: audio and video recordings, diagrams

Deliverables: observatory case studies and documentary videos



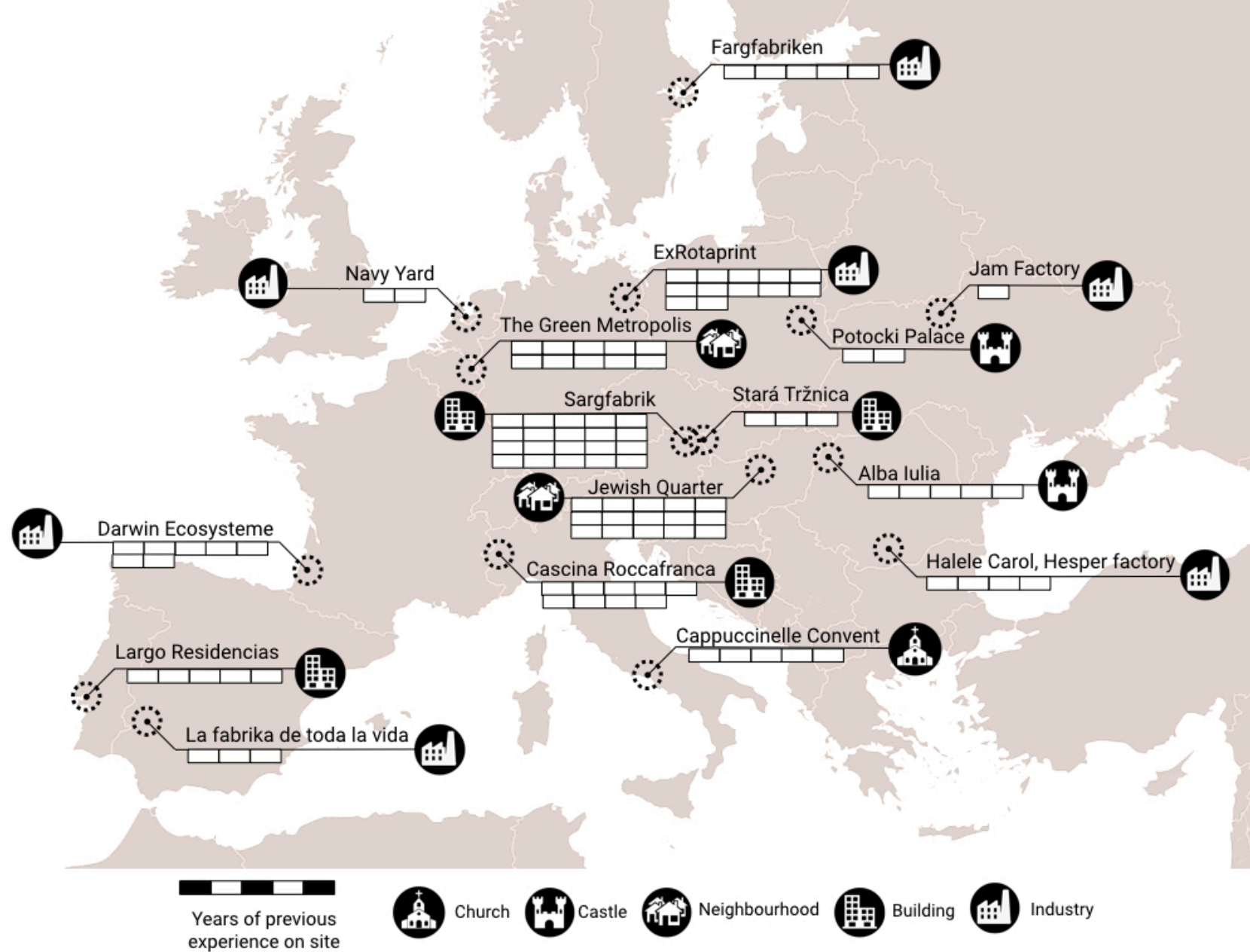
This project has received funding from the European Union's Horizon 2020 research and innovation programme under grant agreement No 776766

OBSERVATORY CASE SELECTION

16 OCs have been selected to represent a variety of

- **regional experiences**
- **geographical positions** (urban, peri-urban and rural)
- **spatial types** – industrial, administrative, residential and commercial buildings, urban and rural sites;
- adaptive re-use **functions**, from cultural to community based, social and environmental;
- **financing and management models**;
- **governance** types (bottom-up, top-down, mixed).

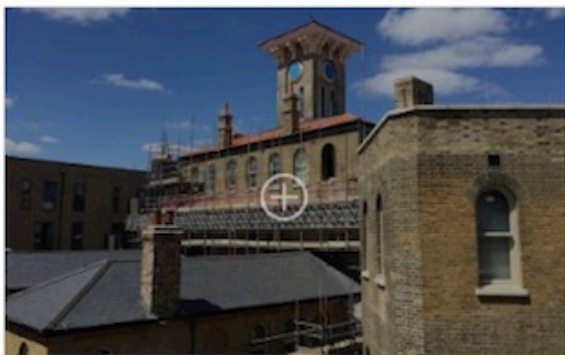








Observatory Case videos are conceived to accompany and support the Observatory Case studies in a format that is more accessible and can reach a broader audience. They tell the story of each initiative through testimonies of their protagonists, highlighting the importance of both individual engagement and community spirit. The OC videos had been produced in the first 24 months of the OpenHeritage project and will be featured in exhibitions, presentations and screenings. You can read about the making of the videos [here](#) and watch the videos in the individual case pages below, or at the project's [Vimeo channel](#).



LONDON CLT

London CLT is London's first Community Land Trust established in the former psychiatric hospital of St Clements, in the Mile End area. The CLT provides affordable housing, allowing long-term residents who would be priced out to stay in the area, countering the...

[read more](#)



SARGFABRIK

The Sargfabrik, a transformed former coffin factory has been one of the most important adaptive reuse projects with an innovative housing aim

[read more](#)



CASCINA ROCCAFRANCA

Cascina Roccafranca is a public social and cultural centre operating in a large former farm house and its courtyard on the periphery of Turin

[read more](#)



Open Heritage Documentaries

1 - 12 of 16

Share



London CLT: Creating comm...

The Open Heritage Project

London CLT is London's first Community Land Trust established in the former psychiatric hospital of St...



ExRotaprint: From Industrial ...

The Open Heritage Project

ExRotaprint was founded in 2007 by tenants of the former Rotaprint industrial complex located in...



Stará Tržnica: Breathing life i...

The Open Heritage Project

Stará Tržnica (Old Market Hall) is a historical building in the centre of Bratislava. The building closed dow...



Largo Residências: Transfor...

The Open Heritage Project

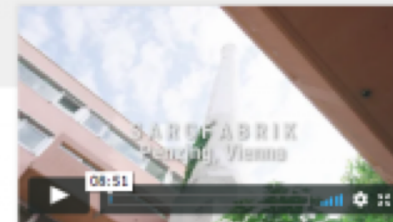
Largo Residências is a hostel, hotel, artist-in-residence and café in Lisbon's fast-changing...



Färgfabriken: From produc...

The Open Heritage Project

Färgfabriken is a platform and exhibition venue for contemporary cultural expressions, with an emphas...



Sargfabrik

The Open Heritage Project

The Sargfabrik, a transformed former coffin factory has been one of the most important adaptive reuse...



Cascina Roccafranca: The jo...

The Open Heritage Project

Cascina Roccafranca is a multi-functional community centre located in a former farmstead in Turin's...



The Convento delle Cappucc...

The Open Heritage Project

The former church complex Convento delle Cappuccinelle, situated in a very dense neighborh...



Szimpla Kert & The Jewish D...

The Open Heritage Project

The so-called Jewish District is a historical neighborhood in the center of Budapest. Recently it...



La Fábrica de toda la vida

The Open Heritage Project

La Fábrica de toda la vida (The Factory of a Lifetime) is a participatory cultural space located in an...



Halele Carol

The Open Heritage Project

Halele Carol represents one of the most well-known adaptive re-use projects in Bucharest. The former...



The Potocki Palace

The Open Heritage Project

The revitalization project of the Potocki Palace, a Rococo residence in a county town called Radzyń...



This project has received funding from the European Union's Horizon 2020 research and innovation programme under grant agreement No 776766

PARTNERSHIPS IN ADAPTIVE HERITAGE REUSE

When various stakeholders are involved, such as NGOs, local communities, different public bodies, private investors, and heritage professionals, it is not that easy to reach consensus or even regulate the decision-making process.

How to build **partnerships** where NGOs, municipalities, private companies and knowledge institutions all have a voice in the adaptive reuse of heritage spaces? How can municipalities work together with civic initiatives in supporting the community-led reuse of heritage spaces? How can built heritage be an asset for the cities, and how can public-private-people partnerships benefit heritage? What is the potential of historical buildings to be more than just monuments to preserve?

